

Interview with Oaklie Thompson and Ruby Lacey at their home in Cardston.
12 July, 1995. Interviewer: Leslie Robertson.

Time:	Tape 1 - Side A: 45 mins. - Side B: 45 mins. Tape 2 - Side A: 10 mins.	<u>Topic of Interview</u>
		Trail building and maintenance in Glacier National Park (U.S.A.) ; Belly River area - Joe Cosley's arrest; Mountainview area farming, ranching, blacksmithing, transportation, wildlife. Arrival of Mormon pioneers in Cardston district; women on the Frontier; Depression and War years.

<u>Tape</u>	<u>Footage</u>	<u>Subject</u>
003		Family History - Mother from Caldwell, Alberta, Father from Wyoming. - married and living in Oklahoma. - Mother received telegramme - her Father passed away. - 1910 moved back to Caldwell- Oaklie born.
076		Trails - Glacier National Park U.S.A. - Elizabeth Lake
095		Joe Cosley - Joe Heimes (U.S. Ranger) discovered Cosley's camp. - Cosley's arrest - tied up with Heimes' bootlaces. - Charged and fined \$50. - Duke Saunders and Lauren Scott retrieved Cosley's cache for him - sold pelts. - death from scurvy.
300		Courted Thursa Webster in Mountain View - parents didn't approve.
343		- buried diamond engagement ring in a tree. Discovery of a Cosley cabin - West side of Beebee Flats on the Belly River - trap set for Marten.
422		Cosley and horses over Ahern Pass to Many Glaciers - anecdote: horses strung to each other - lost footing on glacier - whole train over the edge - bones and packsaddle remains found years later. - Ahern Pass in disuse - road over Red Gap - now Ptarmigan Tunnel.
514		Trails - Ranger Station to Grosvent Falls at Cosley Lake. - Spring - shovelling slide debris off trails - Indian Pass Trail.
568		Anecdote: Mother working with husband - began sliding down a glacier - caught by husband - would have dropped into the river far below.

600 Anecdote: 1925 - 27? Horse loaded with 40 lbs. TNT slid down a glacier 150 ft. and hit rocks - flipped into the air landing on its back - horse lived - didn't explode!

680 Anecdote: Spring - Belly River - horses on other side- Oaklie built stilts to cross river with a pole for balance.

747 Waterton Park
- Oaklie shod horses for the Park - 16 head in one day of shoeing.
- Blacksmithing Mountainview - apprenticed with Sam Earl - 1937.
- Dances - 1920 first memory - Democrat into the Park - crossing Cameron Creek high and rough.

Work in Waterton Park (Blacksmithing)

- Bert Knight, Bo Holroyd (Chief Warden when Oaklie shoeing for Park)
anecdote: shod 16 head - had appendicitis couldn't return to reset the shoes - Wardens brought in Gerald Hatfield who shod only 3 head - fired him - brought in another from Ft. Macleod - fired him also.
- Oaklie paid by the horse not the hour - 20 minutes per horse - \$2 per head, Now \$50 per head.
- Shoeing at Knight's Lake cabin/ station; Cameron Lake; Red Rock - Bert Barnes Warden.
- Capp Thomas, Will Webster, Herald Oland, DeVebber (Warden)

Polish workers transported into the Park to work.

- Burmiss saw Mill - Polish workers - Oaklie shod horses there - anecdote: learning Polish words for "good horse."
Czechoslovakian workers on the Church Ranch.

People

- Grandmother born in Glasgow.
- German people in Mountainview area - Worth, Jack Furiak, August Veron.

Transportation

- saddle horse and buggy - changes.
- peoples self-reliant then - now buy everything.

Dairy and Farming - Mountainview

- Dairy and cheese manufacture until Glenwood started their dairy - then Mountainview started farming.
- Fall before closing, the Mt. View dairy made cheese for the residents for the Winter.

Farming

- Rye, Barley, Wheat, Oats.
- employment - hire out for threshing on the big farms in the Fall.

Moose Hunting up North - Caroline, Alberta.

END OF SIDE A

SIDE B

Horses

- Cars versus Horses - the "good days"
- Community horse range on the Church Ranch.
- anecdote: Oaklie would catch horses and ride them home. He was caught one day by the owner of the horse he was riding. Oaklie told him he was breaking it to ride for him. The owner thanked him and told him to put it back when he was finished.
- rustling ? became worse after motorized vehicles - trucks loading cattle.

Medicines and wild edibles

- Mustard plaster poultice for pneumonia.
- coal oil and sugar for coughs.
- Sour Dock leaves - flavouring.
- "Wild Nibbs" - "Wild Carrots" - white blossom around three feet high - roots.
- Pine - blister of sap - chewing gum.
- Balsam Pine - collect in a bottle for sav - on wounds/cuts.

Waterton to Cardston travelling horseback about 4 miles per hour

- gasoline versus hay and grain - all farms grew hay for their horses.

Land

- Caldwell - used to be the centre for homesteaders close to the present population of Mountain View (350).
- Mormon Church bought the Cochrane Ranch that included the Hillspring / Glenwood areas
- Church sold land to Caldwell families - moved out onto the land to farm.
- 1910 - riding across the Church range (now Palmer Ranch) stirrups dragging in grass.

Fire

- Farmers burnt off stubble - Mountain View - hay and cattle mostly.

Glacier National Park U.S.A.

- Bar X6 horse outfit in Many Glaciers approximately 1,000 head horses.
- Oaklie and brother worked at Crosley Lake tent chalets- tourists on pack trains - turned horses loose at night - round them up in the morning.

Trail - building

- tools - grubhoe, maddock and axe, pick and shovel.
- dynamite (TNT) - for rocks and tree stumps.
- Anecdote: father breaking collar bone from falling explosion debris.

Timber

- from the West place on the Belly River near Payne Lake.
- Poll Haven - south of Mountain View.
- Crooked Creek - Birdseye Butte.

Wagon Trails

- into Park East side of the Belly River.

William Payne - first Homesteader in Mountain View - Payne Lake named after but spelt wrong on the map.

Hunting - Crooked Creek in Fall.

Supplies- milk and eggs into the Park - health inspectors outlawed shipments without inspection.

- anecdote: Oaklie took Strate (in charge of work crew in Park) gallon of milk - picked it up when no-one looking.

Early families East of Waterton River

- Will Payne, Sam Talley, Wallbergers, Nevilles, Caldwells (original family), Newbys, McVaes, MacKenzies.

Coal

- mine at Beezer ridges.
- hauling coal into the Park for the furnace at the Swimming Pool 1920's.

Ruby - DanceHall in Waterton - formal dress.

- Hard times in the 1930's - went to Park with relatives that had a car.
- mostly visited other places around Cardston - people came in to Cardston from outlying districts for events mostly.
- Mormon Church then mostly dancing and youth programmes (Arts) - now sports and outdoor oriented events

Oaklie

Wildlife

- Bears used to be no problem - now fear sleeping outside - Bears have changed.
- Blue Lake above Helen Lake - 5 grizzlies around the camp - checked the horses-grazing while the grizzlies were eating berries - no problem. NOW - scared.
- Wolves - Saddlehorse as a colt attacked by wolf on Bradshaw's (Bird's Eye Ranch)
- got rid of them and now they're hauling them back.
- 1970 - black wolf getting sheep on the Church Ranch - last one heard of - shot.
- Wolf howl - hair-raising sound.

Mail

- through Pincher Creek to Waterton.
- Mail outfits - Cardston - Mountain View - Hill Spring - Glenwood - Cardston.

Ruby

Family History

- 1889 - parents settled Etna, homesteaded on the Saint Mary River.
- built a "stopping house" on North side of the River ford - mostly immigrants arriving from Utah.
- Mormons arriving were escaping religious persecution for polygamy - many had two families - one here and one in Utah.
- Many had property to maintain in U.S.A. as well - threat of imprisonment. Mormons left Utah for Canada and Mexico.

Women on the Frontier

- problems getting clothes - spun yarn from sheep wool.
- bought a bolt of white material and made shirts for the men.

Oaklie his grandmother knitted with 4 needles.

Midwifery

- **Ruby** Grandmother (Katherine Pilling) a mid wife used a saddlehorse.
- sometimes gone for a week at a time.
- Mormon Church sent a woman doctor (Dr. Shipp) from Utah to Cardston to teach women about midwifery.

Waterton - difficult access in the Winter 1930's very harsh Winters.

Depression Years

- everyone in the same boat - cooperation.
- mother worried that there was no money to buy food - sugar scarce.
- some people lost their homes - couldn't pay the taxes - young people moved to the cities.

War

- Many men enlisted so that their families would be taken care of.
- Oaklie** Jim Jacobs lied about his age, Ernest Jones - enlisted to save their properties - Govt. couldn't take the land away and they returned with Veteran Land Settlements.

END OF TAPE ONE

Tape Two

003

Government gave priority to War Veterans - employment in the Park
Delance Strate

Biddle - first teacher in Mountain View and Oaklie's Grandfather Caldwell named
Mountain View.

Question: What do National Parks mean to You?

"I don't know. Good place to go hunting when the Rangers wasn't around"

Homesteaders - lived with someone else until could get their own place.

- Dirt floors, sod roofs or split-log houses.
- Waterton residents sometimes snowed in for weeks at a time.
- Will Payne - born in 1866 - age 17 when came to Canada.

Kootenai Brown

- Oaklie lived in KB cabin on Crooked Creek when worked on roads - also used by hunters.
- Father knew Kootenai - went to dances at his house.
- Kootenai - "friend of the Indians" tipis always around his house.
- Anecdote: Father's story of KB drinking and threatening a Native man with his knife.

Frenchy Riviere

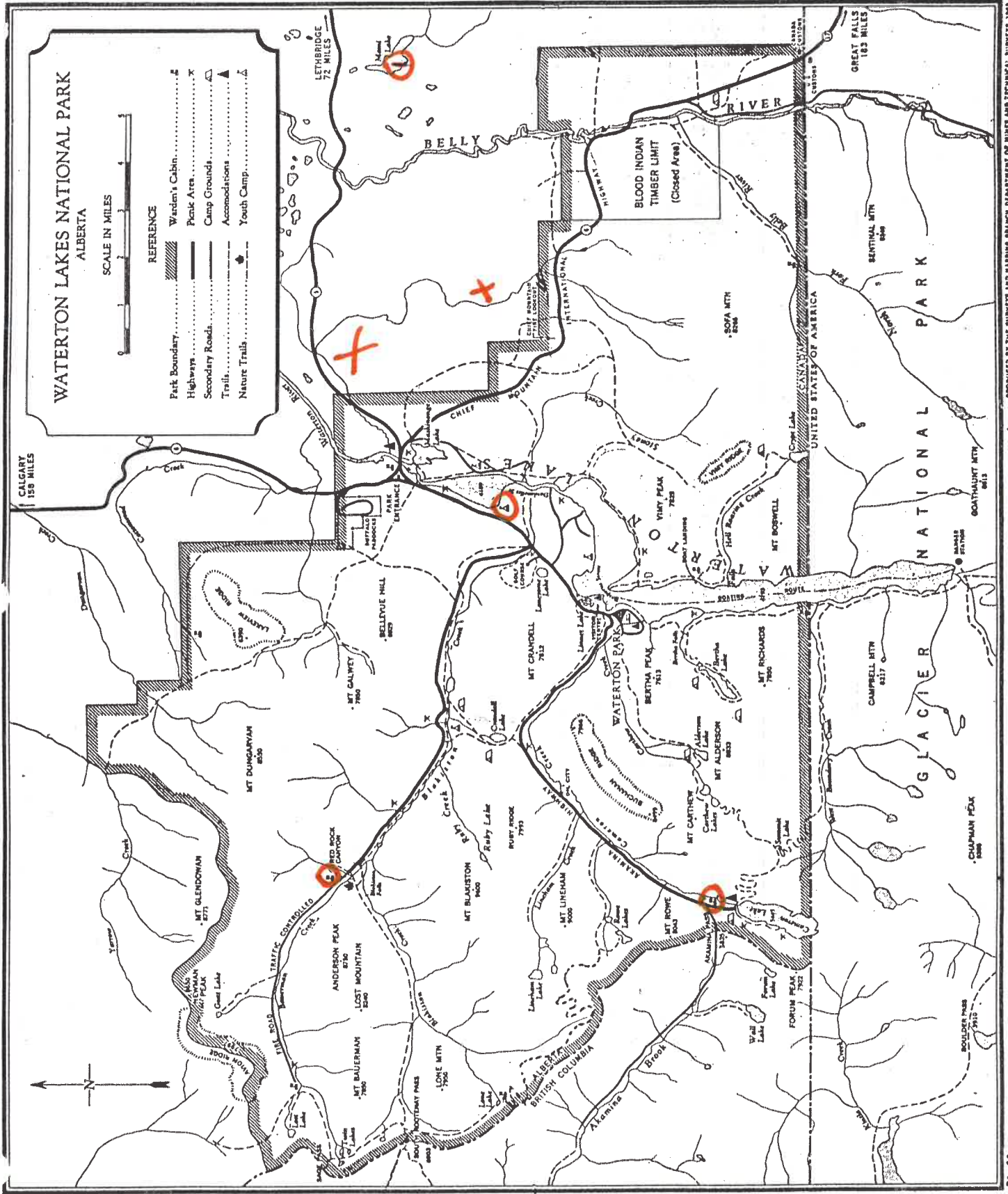
- George Riviere hunted grizzlies on BirdsEye Ranch - cattle killers - 1926 - 27.

Attitudes - Why bringing back wolves?

Anecdote: Killing of a Grizzly Bear and wounding another at Blue Lake -
Waterton? - skinned it and took it out to Walt Jenkins Ranch for the bounty -
didn't have a permit - bounty refused.

END OF INTERVIEW

-



PRODUCED BY THE SURVEY AND MAPPING BRANCH, DEPARTMENT OF MINES AND TECHNICAL SURVEYS, 1964.

OAKLIE THOMPSON

○ SHODD HORSES HERE
 X TIMBER
 ① PAYNE LAKE