

Interview with Mr. Andy Russell at his home the "Hawksnest" Twin Butte, Alberta.
29 th May, 1995. Interviewer: Leslie Robertson.

Time:	Tape 1- Side A: 45 mins. Side B: 45 mins. Tape 2- Side A: 20 mins.	<u>Topic of Interview</u>
		Andy Russell's acquaintance with Waterton Lakes National Park: includes opinions of the Park as an adjacent landowner and environmentalist; trail-riding concession in the Park; reminiscences of old time trappers and other Park personalities.

<u>Tape</u>	<u>Footage</u>	<u>Subject</u>
004		Park history: worked for outfitter Bert Riggall in 1936 - bought him out in 1946. - changing boundaries of the Park. - Kootenai Brown and Bert Riggall.
038		First worked in the area 1936 - Guiding and hunting outside the Park - Flathead, Sage Creek, Starvation Creek areas. - clientele. - game - bear ,sheep, elk.
086		Changes in the area / region. - areas of wilderness. - time - attitudes towards. - National Park regulations - group size, grazing. - collaboration with Park - fire observation - Twin Lakes 1939-40.
134		Fires - 1928 Boundary Creek. - 1910 Pass Creek. - lower Kishinena fire.
151		- anecdote of driving horses through a fire in the Oldman River country near Sugar Loaf Mountain / Stewart Flats 1936.
176		Horses - acclimatization. - breaking horses
196		Outfitting in the Park - bought-out Warder and Rankin outfits / Saddlehorse Co. - Lived on the flats east of the Prince of Wales Hotel - barn, cabin and bunkhouse windy location - 15 feet snow in front of barn. - sold out in 1957. - 53 years of business in and out of the Park - no accidents.

- 251 The Depression
- visitors - wealthy.
- community - tough times but easy compared to other places.
- opinions on affordable travel.
- 288 - Land changing hands - consolidation of large tracts - mortgages - homesteaders bought out.
- 304 Living on the Edge of the Park
- uniqueness.
- wilder than it was in 1906 when Riggall arrived.
- relationship between humans and animals.
- "management" vs "understanding."
- 346 - less human pressure on the wildlife - homesteaders on every quarter section - couldn't make a living.
- 365 Schools
- Spread Eagle, Pineview, Twin Butte, Drywood, Yarrow Creek.
- 372 Homesteaders
- livestock.
- old cabins - timber - lower slopes Indian Springs ridge, upper slopes cleared entirely - now treed.
- houses built from poplar.
- 410 - attitudes towards the land - just "existence." Opinions on proposed development on Cottonwood Creek - water quality.
- 452 Biosphere Reserve and Buffer Zone around the Park.
- influence of the United Nations.
- citizen activism - legal action.
- Industry - oil companies drilling beneath Park.
- 534 Jack Hazzard
- Lumberjack from Ontario, homesteaded Nth Fork Yarrow Creek ("Smith Creek") - gold miner, coal miner.
- character description.
- anecdote: Hazzard working as a cook at Gloyne's Camp (Akamina) - feeding freighters.
- 602 - mining on Grizzly Gulch (Akamina Creek).
- anecdote: Hazzard caught in avalanche - still digging.
- 650 Prospector's Camp
- Russell came across an A frame at Grizzly Gulch- found dynamite wrapped in old blanket placed in the fork of a tree. Cabin used by McClusky? and his sister who were prospectors from the Crowsnest Pass.

**END OF SIDE A
SIDE B**

- 708 Levi Ashman
- Welsh trapper from Fernie B.C. trapline in the Kishinena.
- died in the late 1950's.
- character description.
- worked for Russell for 12 years. "One of the Prince's that wandered these mountains..."
- 742 Charlie Wise
- Trapper on the Flathead up to the Summit.
- 1918 - 1919 -flu epidemic - snowshoed 60 miles with daughter to doctor while wife stayed in cabin and died.
- 760 Medicine - early days.
-Mrs MacArthy - midwife -homestead on Yarrow Creek.
- delivered Kay Riggall (Russell's wife) in a tent on Yarrow Creek.
- 777 - Mrs. Marshall - "Bertha" - character and reputation - trouble with the law.
- nursed Andy's mother suffering from the flu in the 1930's.
- rode out from Blind Canyon every morning- convalescence.
- husband Roy Marshall - rode from Texas at age 7.
- 806 - Naming Bertha Lake - riding with Bo Holroyd.
- tried to pass a five dollar bill as a fifty at the Prince of Wales.
- arrested by Andy Ford (RCMP) early thirties.
- character description.
- 847 Police - very little crime in early Waterton.
- 856 Charlie Wise
- trapped into the early 1950's- east side of the Divide.
- anecdote: 1952 -very rainy day - Charlie appeared out of nowhere to visit.
- 898 - anecdotes: Russell and guests visiting Wise' cabin - immaculate; story of bear skin and Charlie's close call with his own pistol (bullet passed between toes.)
- snowshoeing 40 miles.
- 998 Joe Cosley
- Métis trapper arrived late 1800's -trapped Belly River into Glacier national Park.
- story: early 1920's pursuit by Park Rangers (Glacier National Park U.S.A.) over Bowman Pass, through Waterton, borrowed canoe from Marty Foster - crossed Lower lake, walked out to Mountain View - picked up his cache - sold furs in Winnipeg.
- 1060 Fur business

- dealing with the Hudson's Bay Co.
- Russell trapping by age 9.
- Fur business (contd.)
- 1946 - 66 Beaver in 30 days of trapping - 50 - 60 lbs. each.
- poaching on Pine Creek - licence for beavers.
- 1136 - bury the beaver carcass - bears attracted to scent.

- 1152 Bears - Reminiscences of Close Calls.
- 9 foot wounded Grizzly on Lookout Butte with John Vermont Nixon.
- Black bear known as a cattle killer - Spring 1945 - 46.

1343 **END OF SIDE 2**

TAPE 2

- 002 Question: What does Waterton Lakes National Park mean to you ?
- geographical asset.
- industry - roads , resource extraction.
- wildlife - Grizzlies, Bighorn sheep.
- 017 - North of Yarrow Creek to Banff - used to travel , shrinking wilderness.
- legal action with Shell and Esso south west of Calgary.

- 101 Question: How do you imagine Waterton in another hundred years ?
- don't expect much of a change - protection Biosphere, Parks.
- 110 - anecdote: bureaucracy involved in decisions for access - drilling on the border
- (early 1960's) - heavy machinery.
- 184 - Park engineering schemes - Pass Creek.
- Old Warden Trail - north boundary Park.

Supplement to Andy Russell Interview
29 May, 1995. Interviewer: Leslie Robertson.

1875 June - NWMP travelling down the Old Man River from the Gap to Fort Macleod - observed many sick elk.

ELK

1920's - didn't see any. Later in the decade the elk moved in.

1928 - late Winter - two starving bull elk turned up at Max Bradshaw's (owner of the Bird's Eye Ranch) - he fed them.

1929 - 400 head of elk came up from the Belly River.

1940's - 2,000 head of elk up the Castle River / Boundary Creek / Belly River.

1937 - Andy Russell first saw elk.

Vermont Nixon Paid by the Provincial Government to shoot elk

Andy Russell Andy shot 125.

Shaw (ex NWMP)

- Meat went to the Pincher Creek Hospital and to the Peigan Reserve.

BULL TROUT

1945 - 46 Russell saw a decline in Bull Trout populations which he corresponded with the arrival of Oil Industry.

- Yarrow Creek - if saw 6 Bull Trout it was good.

- Dam on the North fork of the Drywood Creek affected populations.

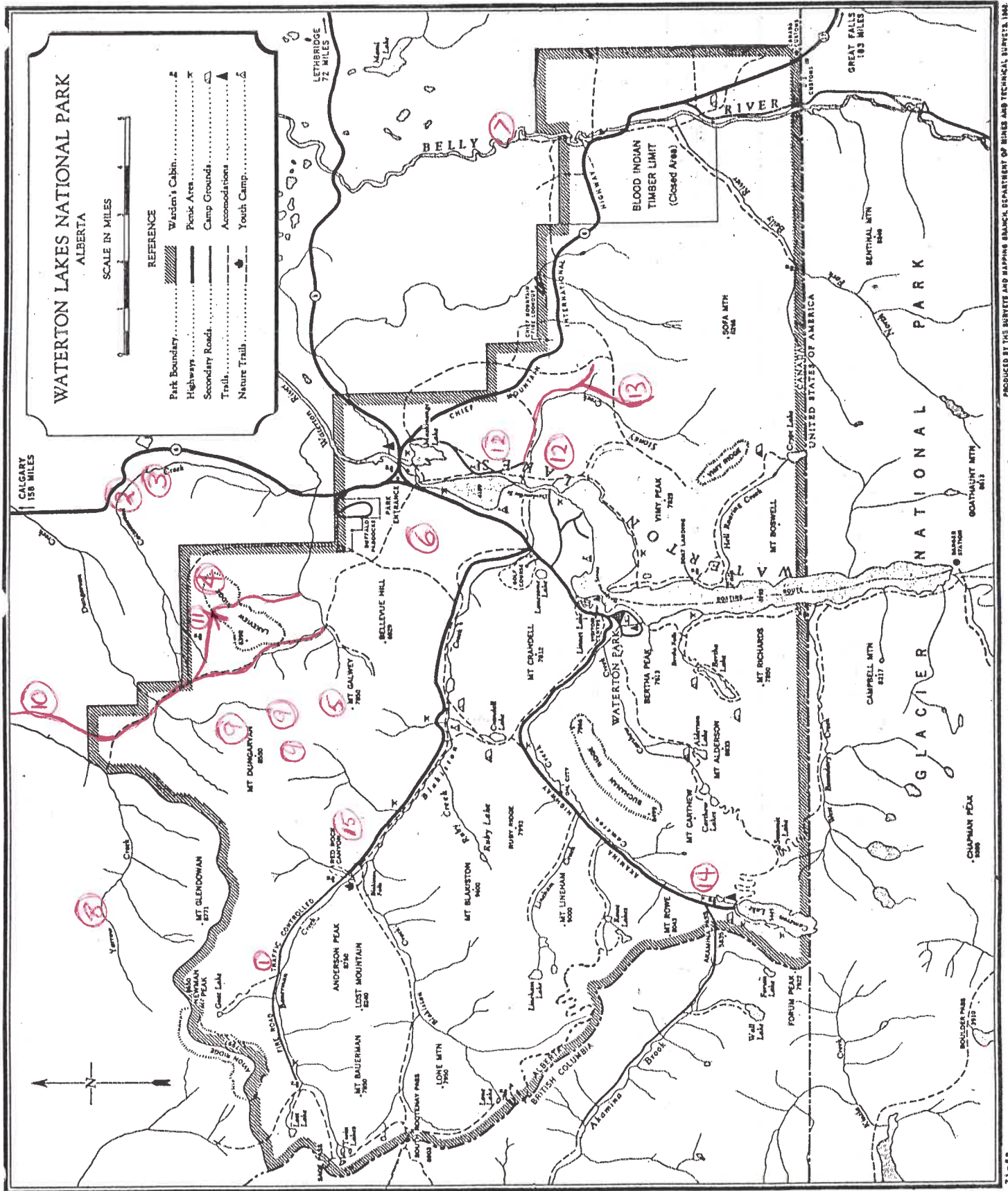
- used to be Bull Trout in Cottonwood Creek / Dardanelles / Hell Roaring and Boundary Creek.

BEAVER

1946 - 150 active dams on the Horseshoe and Cottonwood Creeks.

- Russell trapped / shot 66 on Cottonwood Creek.

- most trappers obtained an export permit and shipped furs / skins via CPR to Winnipeg where they were auctioned off or to Vancouver (Little Brothers.)



1. COSLEY TREE
2. COSLEY TREE (WHITE MUSEUM)
3. STONEY MOUNTING CAMP 1905
4. RIGGALL PEAK (2 GRAVES)
5. THE HORN
6. THE BADLANDS
7. COSLEY TREE
8. SMITH CREEK
9. STONEY HUNTING BASINS
10. OLD STONEY TRAILS
11. HUNTING BLINDS
12. NATIVE CAMPSITES.
13. TRAVOIS TRAIL

14. HUCKLEBERRIES
15. SASKATOONS

ANDY RUSSELL