

Interview with George Annand at heritage Resource Conservation office, Waterton Park.
16 June, 1995. Interviewer: Leslie Robertson.

Time: Tape 1- Side A: 45 mins. - Side B: 45 mins. Tape 2- Side A: 15 mins.	<u>Topic of Interview</u>
	Family history - dairy in Park; Depression years - Relief Camps; Wars; Fishing; Surveying International Line; Archaeology; Kainai - relations with; Supplies into the Park natural resources; Human - Wildlife relations; Wardens 1930's; Personalities; Accidents in the Park - drownings; Fires - 1922, 1934, 1935; Homesteading - land acquisition; National Parks.

<u>Tape</u>	<u>Footage</u>	<u>Subject</u>
003		Family lived on farm North of Mountain View - 1920 - Summer - vegetable garden - lettuce and radishes to the Park - Fall supplied cook house with potatoes and turnips. - 1922 - Dairy at Pass Creek - original bridge - lodgepole pine. - lived in tents, cream separator at creek, cows from May to September. - 1924 - moved to Waterton permanently - age 9 years. - school next to Kilmorey site.
030		Isolation on farm at Belly River - move to Park great. - lived on flats where Andy Russell stables were - Dave Simpson after Russell. - sold dairy Spring 1926, operated from 1924 - 1925. - attended school until 1932 - quit to survey.
046		Building the Prince of Wales Hotel Attended school at the Beer Parlour 1926 (Waterton Lakes Hotel - Cushell and Greenway)
056		Waterton School - 1928 - first half of Waterton school built for lower grades - 1929 grades 1 - 11 moved into the school
066		Employment in the Park 1939 - went to War - returned 1945
071		World War Two - changes after - Administration, influx of tourists, businesses. - increase in administrative staff and wardens.
080		Warden / Parks Cabins - moved into town - Red Rock and Belly River

- replaced Waterton cabin
 - Fish Hatchery- imported fish to Banff
- 092 Fishing
- stocking - until natural reproduction
 - hybrids - cutthroat and brook trout in upper lakes except Bertha (rainbow trout)
- 105 - Bull Trout - plentiful at hole Waterton River and Pass Creek by Church Camp
3 - 4 lbs. average.
- 120 Employment with Parks
- employed as shop mechanic 1946 - 1967.
 - retired, moved to Lethbridge 1969.
 - Father George Annand stores keeper after sold Dairy - 1929 - 1951.
- 132 Surveying with road camps 1933
- Chief Mountain road - five Relief Camps locations.
 - 60 men per bunkhouse and cookhouse.
 - 20 cents / day plus clothing and board.
 - men mostly from Lethbridge district.
- 150 Cameron Lake Camp
- proposed road from Glacier through the Kishinena to Waterton 1933 - 34.
 - tools - axes, cross-cut saws.
- 164 Chief Mountain road
- 14 miles from Y Camp to U.S.A. boundary
 - completed 1936 - gravelled, still travelled before gravelling.
 - paved 1940.
- 178 Akamina Parkway (road construction) - Archaeology
- cave approx. 100 yards up Bear's Hump slide area from gate on road.
 - human skull and animal bones found when grading
 - speculation of origins.
- 204 Brian Reeves - dig at the Narrows - fishing camps.
- 215 Sampson Valley - Sofa Mountain - located at the head of Stoney Creek
- 255 Farm on the Belly River - 160 acres bordering Kainai Reserve
- played with the Scout children
 - Bloods grew vegetables and picked berries
 - traded Saskatoon berries for vegetables
 - Annands grazed their cows on Reserve land - 18-20 cows
 - lease land on the Reserve - more open then now.

- 281 Hunting
- 288 Levi Ashman
- trapline - Gloyne's Camp - Akamina-Kishinena
Joe Cosley - heard many stories of him.
- 299 Frenchy Riviere
- dog team - full-blood wolf team raised from pups.
- trapped B.C. early 1920's - otter , martin, beaver.
- hunted wolves
anecdote: Frenchy tied dogs at Park HQ stayed overnight with Jack Gladstone
Parks barn boss.
- 1927 - POW Hotel hired Frenchy to tell Western stories.
- physical description - clothing: buckskins and Métis sash.
- 338 Wolves
- never heard anything about them.
- saw tracks Red Rock Canyon late 1960's.
- Ranchers in Mountain View spoke of wolves in Poll Haven area - pack there
early 1920's also in B.C.
- 360 Elk
- original herd Belly River - moved into Oil Basin and Stoney Flats.
- 1933 heard first bugle.
- 368 Surveying the International Boundary Line
- Americans missed Canadians by 150 feet - had to re-survey 1.5 miles to connect.
- working with Frank Goble at Camp # 5 , Sept. 1933 first men there.
- 390 Belly River cabin and barn.
- supplies brought in on packhorses.
- U.S. Ranger cabins - materials in through Carway to Cardston.
- 434 Materials and supplies
- POW materials through Cardston from the U.S.
- frame houses in Park - materials from Lethbridge - Cardston - Park.
- log houses - wood rafted down Lake, timber from Head of Lake - Morris
Brothers.
- 459 Park Mills
- Mill near Red Rock where Goat Lake trail takes off.
- 1930's - mill at summit of Chief Mountain (Lookout)
 - mostly studs and rafters for sheeting.
- Park buildings - Cookhouse - all logs, barn, warden Warehouse, Garage - logs

rafted down lake 1918 - 1921.

- Head Quarters and Warden's Cabins built v. quickly after World War One
roads improved and bridges built.

507 Fuel

- wood from Oil City burn area - for use in Townsite early 1920's.

- Jackpine, stove-length wood - woodyard at Oil City.

1935 - hauled from the head of the Lake - rafted down to woodyard on the shore
by the Catholic Church Camp.

Coal - from Cardston - coal furnace at administration office - buildings along
Cameron Creek , Superintendent's house.

555 Wildlife

Sheep - 1950's moved out of Red Rock Valley

- mid 1920's "Vimmy Ridge" above Narrows (east side) by lake 7-8 herds of
sheep there.

581 END OF SIDE A

582 -Natural salt licks - Parks licks - Red Rock, Cameron, Pasture.

Deer - no changes perceived.

Elk - more numerous, 1940's Belly River Valley, Stoney Creek Flats, Oil Basin.

Moose - common at Red Rock, Cameron - salt licks ? 1950 - 1960's.

610 Relationship between Humans and Wildlife

- respect - transportation technology.

- hunting - changing attitudes - "gentlemen hunters"

- ranchers use of poison - coyotes, livestock.

- open garbage dumps in the Park - steady procession of bears back and forth- no
problems.

647 Berry patches

- Saskatoons - Red Rock canyon near Pass Creek cabin

- Choke Cherries - Pass Creek lining the road up steep grade on Red Rock rd.

- badlands - between Red Rock Road and Mt.

MAP - waggon trail joins Red Rock road around the trade waste pit site - trail for
equipment to Oil City.

683 Oil Basin ?

692 Wardens - World War One veterans

- Jack Giddie - arrived in the mid 1930's from Yoho.

- Bo Holroyd - arrived 1919 - homesteaded West of Twin Butte

- Mac Mc Allister - arrived 1920 - 21 - also homesteaded this area

Town warden late 1920's, died in 1937 while stationed at Red Rock cabin.
- Holroyd and Mc Allister both vets from WW 1 - received "soldier's Settlement" land scrip.

709

Bert Barnes

- built pink stucco house in Park
- Town warden for 5-6 years.- moved to Belly River
- after Giddie retired moved to Waterton cabin by Park entrance.
- Yarrow cabin - Oil Basin - Nth. boundary of Park.
- slightly shell-shocked - sniper in WW1 - talked rapidly, blinking eyes.

Bo Holroyd

- outgoing, spry.
- sergeant in WW1 - deaf from shells, received pension
- five children - lived at Cedar Cabin - HQ for Chief warden.

Bert Knight

- lived Cedar Cabin first year Chief warden
- Summer - Chief warden , Winter - acting Superintendent for six months. person from Ottawa was Suptd. for the Summer months.
- Knight's Lake

770

Why doesn't Kootenai Brown even have a frog pond named after him?

773

Kootenai Brown

- well educated - refer to Rodney book.
- son Leroy and two daughters.
- first wife Olive died shortly after son born while Kootenai on a binge. Watching for Kootenai on Knight's Hill
- Homesteads locations ? Last house a frame house at Govt. compound.
- children went to Mission School with Father Lacombe - Leroy died in his 30's.

810

Nichemoose - Blue Flash of Lightning

- Kootenai Brown meeting her at Riel rebellion - Cypress Hills ?
- "Hard looking woman" - stayed at Annands dairy occasionally - also at Rivières'
- George Annand Sr.. picked her up and she would stay with them at Pass Creek and visit Kootenai's grave.
- George Annand Sr.. picked up her body and brought it back into the Park for burial - Park paid for transportation. Buried beside Kootenai 1935.
- stayed with Annands early 1920's, frightened children.
- very kind person - didn't speak English but understood - did all of the hunting for the Brown household, Kootenai away often.

846

"Lord" Brookes and Butcher - Remittance Men

- English - families very wealthy - received around \$30 - 35,000 per year.
- world travellers - homesteaded but didn't work the land.
- anecdote: Brooke paying for a taxi from Northern California to Pincher Creek.
- stayed at POW Hotel 3 or 4 days then camp down at the Narrows in a Teepee - heavy drinker - received visions.
- description: knee breeches, high boots, buckskin (from Peigan), monocle.

883

Butcher

- bachelor as well - didn't come into the Park.
- anecdote: Christmas dinner at Butcher's place - turkey - left the innards in it.
- known to be a "woman hater"

911

Mrs. Gladstone

- married to Jack Riviere - Parks barn boss 8 teams of horses to pull waggons and graders.
- weren't very many women around in early days.

Mrs. Holroyd

- registered nurse - worked at POW Hotel first summer it opened.
- doctor stayed in Waterton each summer (from Lethbridge)
- Govt. had an ambulance - Pincher Creek Hospital.

944

Accidents?

- Cameron Falls drowning July 1928, 9 year old boy.
- Chrystal Pool - drowning
- Lake Linnet drowning 1958
- Narrows drowning 1930's.
- Upper Lineham Lakes - hiking fatality

974

Fires

- 1922 - Pass Creek - peaking over Crandell
- 1934 - Castle River B.C. lightning strike - put out by rain.
- 1935 - August - lightning strike at head of lake - Boundary creek.
 - fire started near Nooney and Wurdeman lakes - took 3-4 days to blaze up.
 - 270 Civilian Conservation Corps men from Glacier first in on boats to drop all the equipment - Polaskis, axes, saws, giggy bags (held 10lbs. water), and food.
 - fire stopped sth. side of bertha Creek where timber sparse and green stand poplar. Wind changed direction also.
 - worked for 4 - 5 days putting out spot fires.
 - water pumps - main pumper on shore, five stations up the mountain - canvas bags and tanks.
 - 450 - 500 men originally called up to fight the fire - RCMP walked into the dance hall and recruited / ordered men to fight fire - some out there in suits and Oxfords.

- the
- 150 members of the Blood Tribe fighting the fire as well.
 - Cameron Bay - main camp - food, barges departed from there down to fire. Frank Goble the cook - "washtub of stew," bread and coffee.
 - men from Glacier left the same day they came in.
 - fire could have been avoided if they had 'spotters'
 - smoke - couldn't tell where the fire was - proximity to town.

- 1148 Dance Hall Fire ?
- working in Cardston 1938

END OF TAPE ONE

Tape Two

- 001 Dance Hall
- description - Maclean's hall - pillar
- Mart Kenny Band
- dancing until 1- 2 am. Saturday shut down until midnight - cruise down the Lake on the International from 9 pm until midnight - return to dance hall 1928 - 30.
- 032 prohibition ?
- bootlegger early 1920's MacMillan from Lethbridge.
- "Whisky Sixes" - running across the Line.
- 048 The Depression Years
- easy times for those in the Park.
- everyone employed - no droughts like on the prairies - no "dire straits"
- mostly Govt. workers in the Park - businesses not really affected compared to Lethbridge. Hard times on the prairies where they depended on growing season.
- 068 - 1932 - quit school and worked on road camps - not a financial decision.
- journey to Saskatchewan 1938 - fences drifted over with dust - fences with fences over top. (Moose Jaw and Swift Current area) - drought around Lethbridge area.
- 081 Homesteaders
- many of children wouldn't take them over - bought out by large landowners.
- "gentlemen farmers" - cattle ranchers now.
- subdivisions.
- 097 "Soldier's Settlement" - WW1 = 160 acres to "prove up"
WW2 - "Veterans Allowance" - housing
Father 1916 - 160 acres for \$10 - if proved up = built a house, cow / chickens to get patent. Twin Butte.
- 122 1918 - rough homesteading - family lived there for 1.5 years then moved back to

Belly River.

- sister Betty Baker attended Drywood School aged 8 - 9 years old.

134

Peace Park established 1932

- celebration at the boundary - year?

- workers not very interested - good advertizing for businesses and Rotarians.

183

Prince of Wales Hotel

- shut down 1932 - 33 for three or four years.

- shut down from 1941 - 1947 - WW 2.

203

Question: What do National Parks mean to you ?

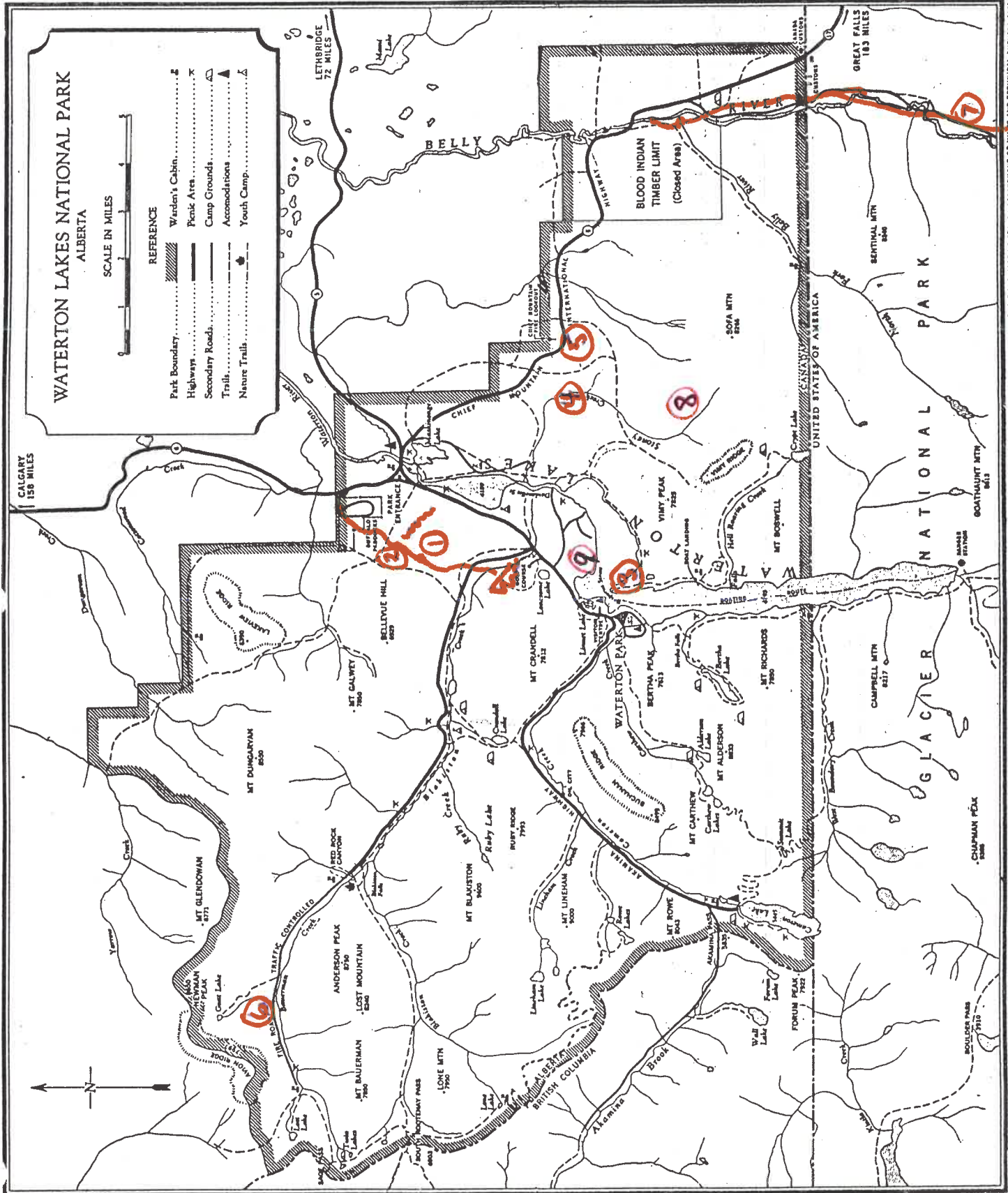
- preserve wildlife in natural state.

- opportunity for people who have never seen such places.

- take it for granted.

- Prisoner of War Camp - returned and realized how fortunate he was to have been brought up in Waterton. - Peaceful - freedom

248 END OF INTERVIEW



PRODUCED BY THE SURVEY AND MAPPING BRANCH, DEPARTMENT OF MINES AND TECHNICAL SURVEYS, 1944.

GEORGE ANNAND.

- 1. BADLANDS
- 2. WAGON TRAIL
- 3. Vimy Ridge
- 4. Stony Creek
- 5. SAW MILL 1930's.
- 6. BERRIES
- 7. SAW MILL
- 8. SAMSON VALLEY
- 9. WOODYARD 1935